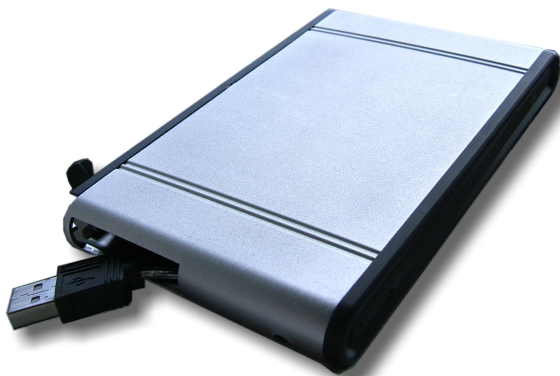


www.aixcase®.de

# User Manual



**USB 2.0 enclosure ALU for 2.5" IDE HDD  
silver (AIX-IUB2A1)**

## Package Contents

### In the box you will find:

- USB 2.0 enclosure ALU for 2.5" IDE harddisks
- side strip
- USB 2.0 extension-cable
- USB-Power-Cable
- Screwdriver + screws
- Case bag
- DRIVER CD for Win98 SE

**If there are any parts missing, please contact your dealer!**

## Installation of a 2.5" IDE harddisk

a) Carefully remove the side strip from the enclosure (if sticked).

b+c ) Remove the screws under the side strip and pull out the cover.

d) Carefully pull out the mounting frame for 2.5" HDD on the other side of the enclosure (please pay attention not to rupture the USB-plug!)

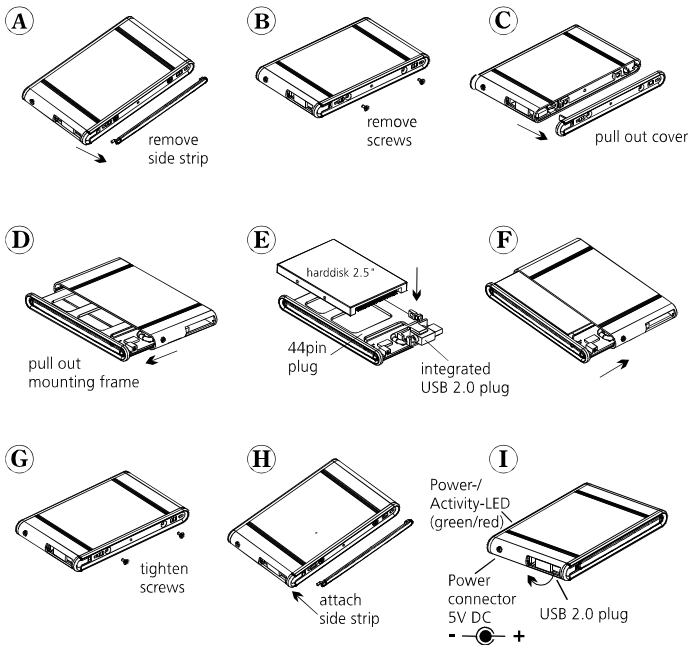
e) Take your 2.5" IDE harddisk and connect it to the 44pin-plug on the mounting frame. The plug is protected against polarity reversal and should be easily connected to the harddisk. If not, please check if you have to turn the harddisk.

Fix the harddisk with the two provided screws in the front of of the mounting frame.

**Please be sure, that the harddisk is configured as MASTER!**

f) Carefully put back the mounting frame with installed HDD into the enclosure. Please be sure, that the integrated USB-plug is at the correct position.

g+h) Attach the cover to the enclosure (watch the correct position of button for unlocking USB-plug), tighten the screws and put up the side strip.



i) Connect the USB-plug of the enclosure to the USB port of your PC (USB 2.0 recommended for full speed), or connect the USB extension-cable to your PC and to the USB-plug of the enclosure. If your USB port does not provide much power, it is recommended **not** to use the USB extension-cable.

j) If your harddisk does not spin up correctly, connect the additional USB Power-Cable to a free USB port of your PC and on the other side to the Power connector of the enclosure.

If you use Windows ME/2000/XP, Mac OS Version 9.0 above or an actual LINUX-distribution, your harddisk will be recognized automatically by the operating system.

**For Win98 SE an additional driver must be installed from the provided Driver CD.**

## Driver Installation for Win98 SE

After recognizing the enclosure as "New Device" please select "search for available driver" and confirm with "Next".

Then choose "Specify a location" und insert the provided DRIVER CD into your CD-ROM.

Select the path **DRIVERS/CYPRESS**.

Confirm the following two boxes with "Next" and the Cypress-Driver for your enclosure will be installed.

## Additional Hints / Troubleshooting

- If you use a brand-new harddisk, it is necessary to partition and format the harddisk. Please follow the instructions of your operating system.
- To prevent data loss, you should always use the function "Safely remove" if you want to remove the enclosure during running PC.
- Your enclosure is equipped with a modern Cypress-Chipset and will work with all current IDE-harddisks.  
If you find a brand-new harddisk which is not recognized by your PC, please try to change the configuration of the harddisk from MASTER to SLAVE or CABLE SELECT.
- If your harddisk does not spin-up correctly although you have plugged in the USB Power-Cable, perhaps your harddisk needs more power than provided by your USB-port. Sometimes it is helpful, to use an **active** USB-HUB, or an optional external power adaptor 5V DC (CAUTION! Watch the polarity!)

Actual drivers, support information and information about other aixcase-products you will find at our website

<http://www.aixcase.com>.

**Manufacturer:** f9com GmbH, Fronhofstr. 9, D- 52146 Würselen, Germany.  
All trademarks are registered by their respective owners.  
The information contained herein is subject to change without notice and is provided "as is" without warranty of any kind.

